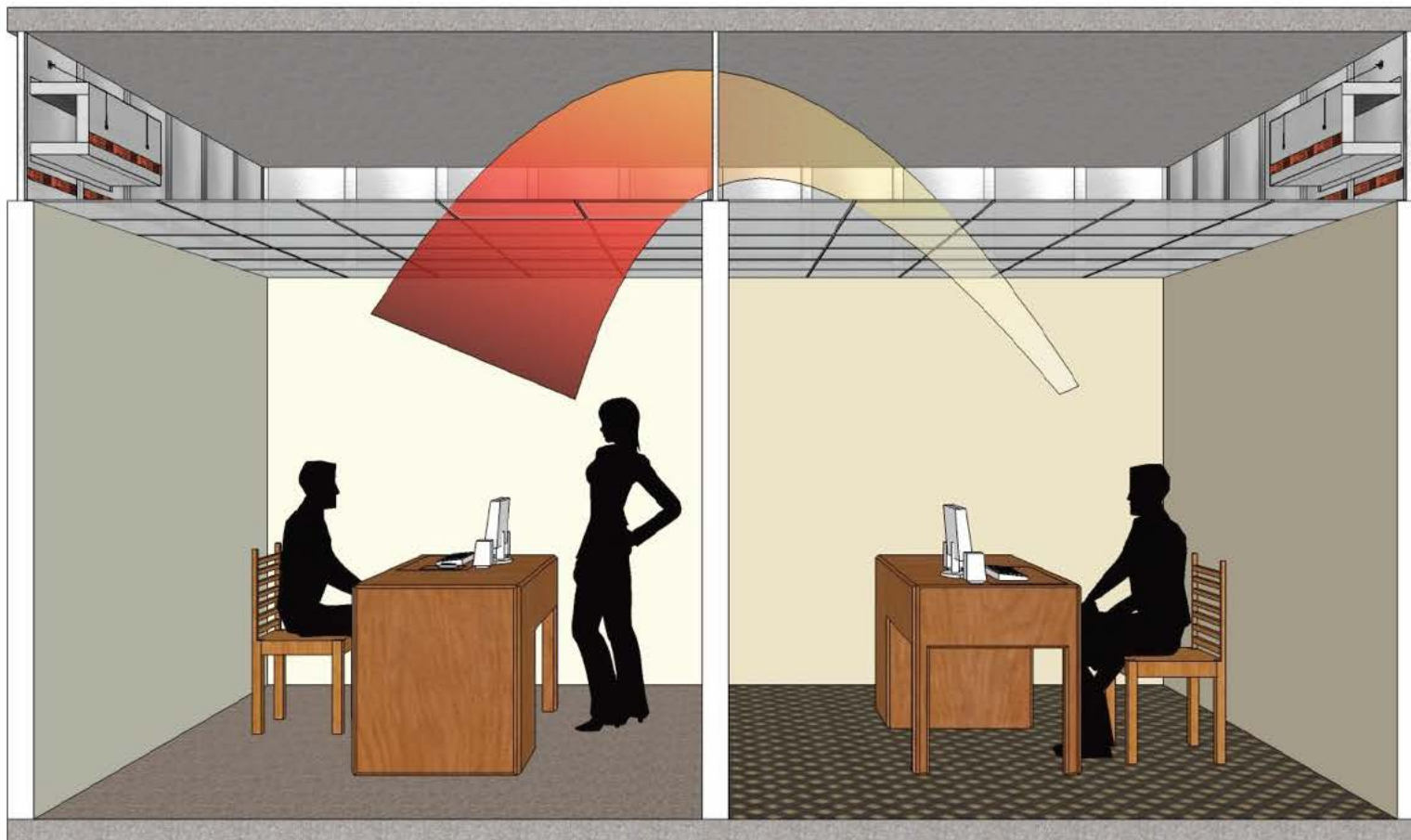


# AcoustiGuard™

SOUND CONTROL FOR BUILDINGS

## PRIVACY BOARD™ & RETURN-AIR SILENCER

ILLUSTRATED INSTALLATION GUIDE



PROJECT  
PRIVACY BOARD™ &  
RETURN-AIR SILENCER  
ILLUSTRATED INSTALLATION GUIDE

PROJECT #  
0002  
REVISION #  
-R007

FIRST ISSUED  
April 12th 2011  
THIS REVISION DATE  
Oct 13th 2011

DRAWN BY  
P.H.  
SCALE  
Relative

ACOUSTIGUARD - WILREP LTD.  
1515 MATHESON BLVD. EAST, UNIT C-10  
MISSISSAUGA, ONTARIO L4W 2P5  
(905) 625-8944 (888) 625-8944

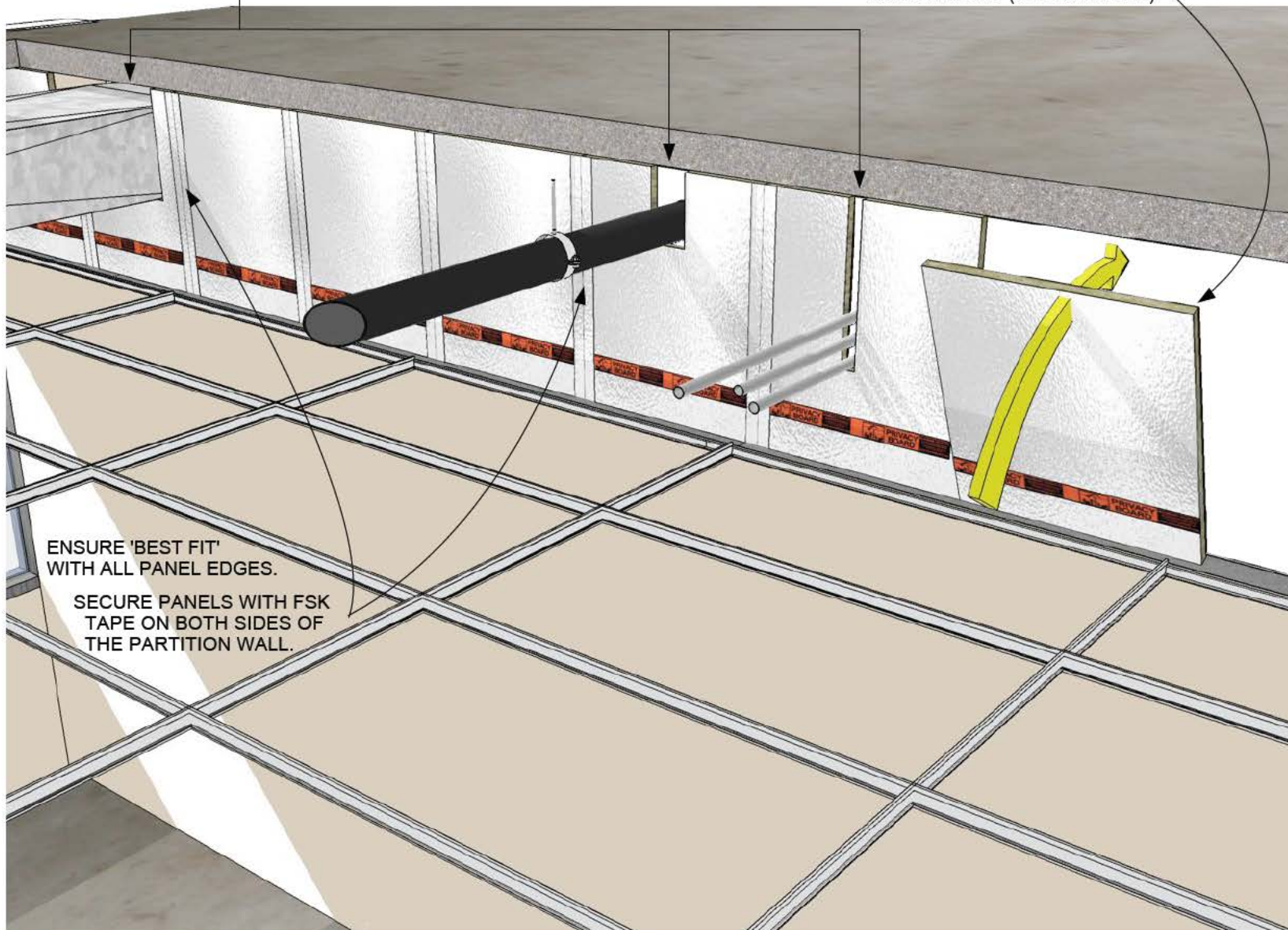
COVER  
PAGE

CUT THE PRIVACY BOARD™ FOR 'BEST FIT' AROUND PENETRATIONS THAT ENTER THE PLENUM SPACE.

CUT THE PRIVACY BOARD™ TO LENGTH TO ACHIEVE A 'PRESSURE FIT' BETWEEN THE TOP OF THE PARTITION WALL AND THE UNDERSIDE OF THE STRUCTURAL SLAB ABOVE. (See note below).

ENSURE 'BEST FIT' WITH ALL PANEL EDGES.

SECURE PANELS WITH FSK TAPE ON BOTH SIDES OF THE PARTITION WALL.



**Note:** For dimensions less than 24-inches between the top of the partition wall and the underside of the structural slab above, AcoustiGuard recommends using the Privacy Board™ horizontally.

**AcoustiGuard**  
WILREP LTD.

**ACOUSTIGUARD - WILREP LTD.**  
1515 MATHESON BLVD. EAST, UNIT C-10  
MISSISSAUGA, ONTARIO L4W 2P5  
(905) 625-8944 (888) 625-8944

**FIRST ISSUED**  
April 12th 2011

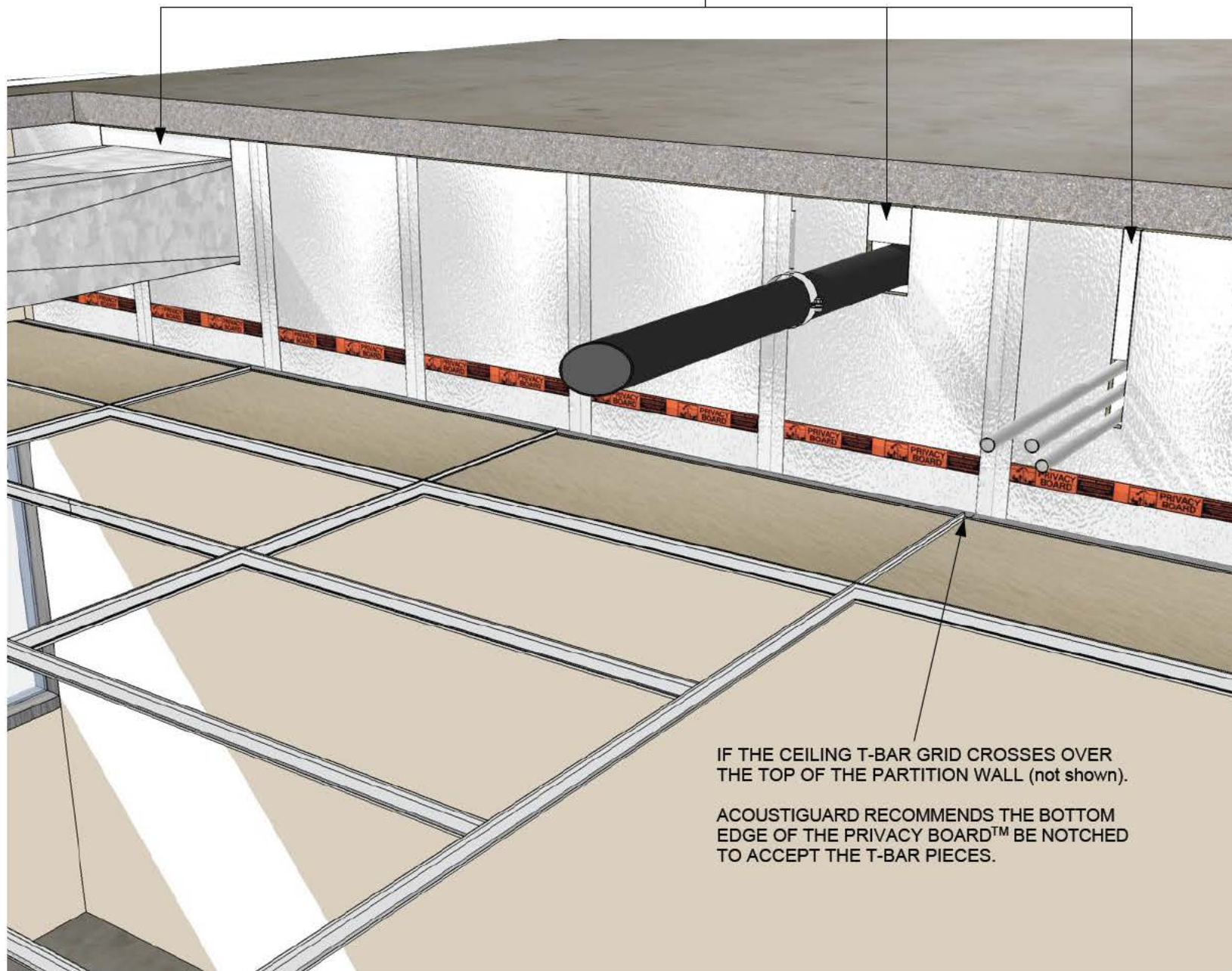
**THIS REVISION DATE**  
Oct 13th 2011

**PROJECT &  
REVISION #**  
0002-R007

**PROJECT  
PRIVACY BOARD™ &  
RETURN-AIR SILENCER  
ILLUSTRATED INSTALLATION  
GUIDE**

**A**

FILL THE VOIDS IN THE PRIVACY BOARD™ WITH PIECES OF OFF-CUT.



IF THE CEILING T-BAR GRID CROSSES OVER  
THE TOP OF THE PARTITION WALL (not shown).

ACOUSTIGUARD RECOMMENDS THE BOTTOM  
EDGE OF THE PRIVACY BOARD™ BE NOTCHED  
TO ACCEPT THE T-BAR PIECES.

**AcoustiGuard**  
WILREP LTD.

**ACOUSTIGUARD - WILREP LTD.**  
1515 MATHESON BLVD. EAST, UNIT C-10  
MISSISSAUGA, ONTARIO L4W 2P5  
(905) 625-8944 (888) 625-8944

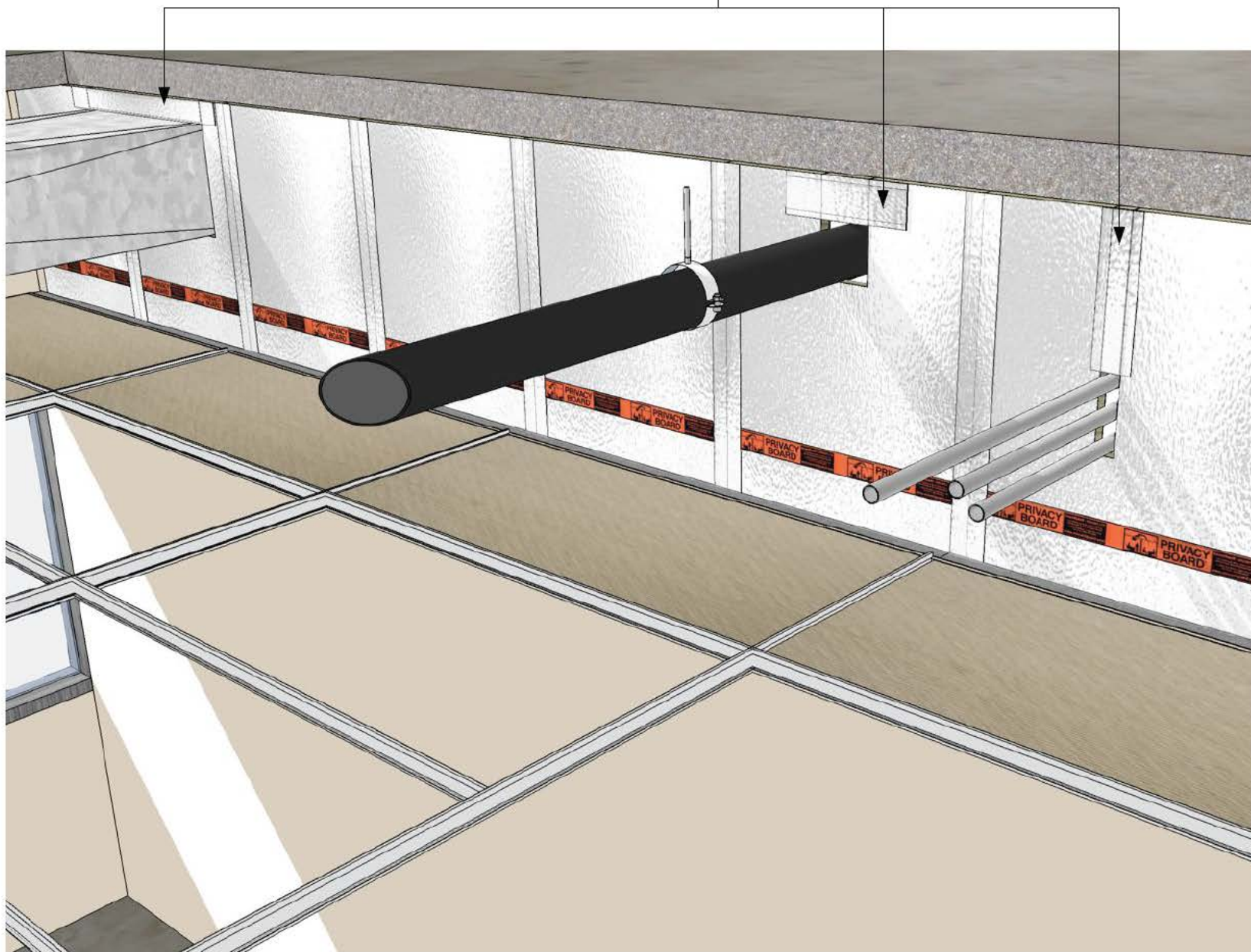
**FIRST ISSUED**  
April 12th 2011

**THIS REVISION DATE**  
Oct 13th 2011

**PROJECT &  
REVISION #**  
0002-R007

**PROJECT  
PRIVACY BOARD™ &  
RETURN-AIR SILENCER  
ILLUSTRATED INSTALLATION  
GUIDE**

SECURE THE PRIVACY BOARD™ OFF-CUT FILLER PIECES WITH FSK TAPE.  
APPLY THE FSK TAPE TO BOTH SIDES OF THE FILLER PIECES.



**AcoustiGuard**  
WILREP LTD.

**ACOUSTIGUARD - WILREP LTD.**  
1515 MATHESON BLVD. EAST, UNIT C-10  
MISSISSAUGA, ONTARIO L4W 2P5  
(905) 625-8944 (888) 625-8944

**FIRST ISSUED**  
April 12th 2011

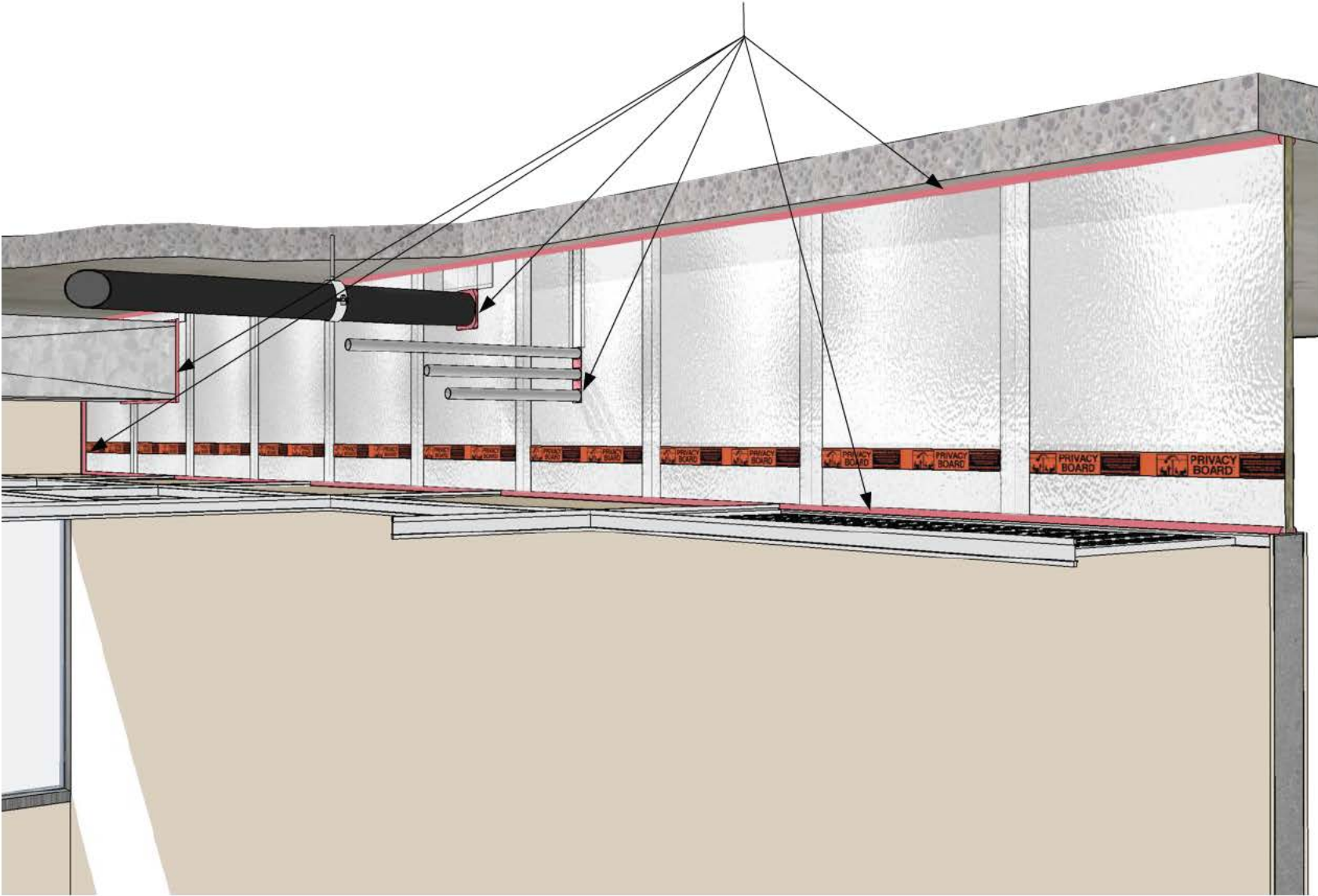
**THIS REVISION DATE**  
Oct 13th 2011

**PROJECT &  
REVISION #**  
0002-R007

**PROJECT  
PRIVACY BOARD™ &  
RETURN-AIR SILENCER  
ILLUSTRATED INSTALLATION  
GUIDE**

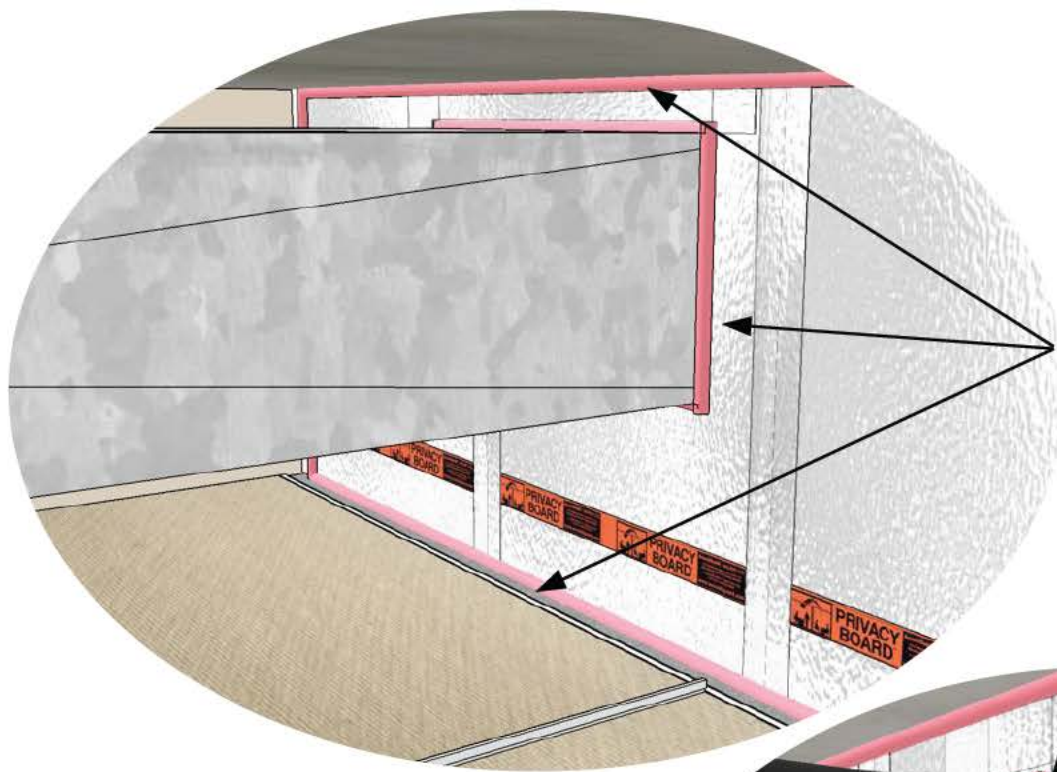


INSTALL CLASS 1 SPRAY FOAM OR CAULKING TO SEAL **ALL** PERIMETER BOUNDARIES AND VOIDS.  
ACOUSTIGUARD RECOMMENDS THAT BOTH SIDES OF THE PRIVACY BOARD™ IS SEALED.

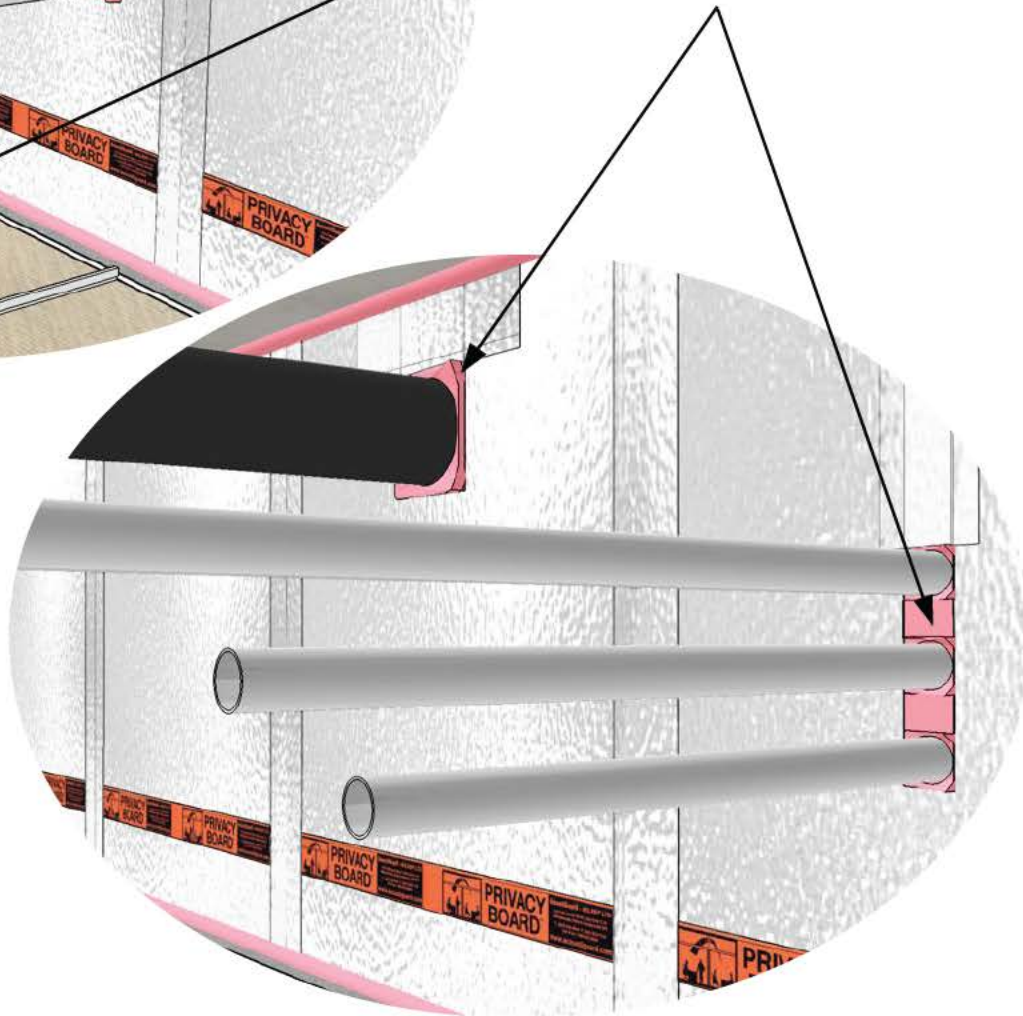


<b>PROJECT</b> PRIVACY BOARD™ & RETURN-AIR SILENCER ILLUSTRATED INSTALLATION GUIDE	<b>PROJECT &amp; REVISION #</b> 0002-R007	<b>FIRST ISSUED</b> April 12th 2011	<b>ACOUSTIGUARD - WILREP LTD.</b> 1515 MATHESON BLVD. EAST, UNIT C-10 MISSISSAUGA, ONTARIO L4W 2P5 (905) 625-8944 (888) 625-8944
		<b>THIS REVISION DATE</b> Oct 13th 2011	

**D**



SEAL **ALL** PERIMETER BOUNDARIES,  
VOIDS, AND PENETRATIONS WITH  
CLASS 1 SPRAY FOAM OR CAULKING.  
(close up)



PROJECT  
PRIVACY BOARD™ &  
RETURN-AIR SILENCER  
ILLUSTRATED INSTALLATION  
GUIDE

PROJECT &  
REVISION #  
0002-R007

FIRST ISSUED  
April 12th 2011

THIS REVISION DATE  
Oct 13th 2011

AcoustiGuard  
WILREP LTD.

ACOUSTIGUARD - WILREP LTD.  
1515 MATHESON BLVD. EAST, UNIT C-10  
MISSISSAUGA, ONTARIO L4W 2P5  
(905) 625-8944 (888) 625-8944



1. SELECT A LOCATION FOR THE PLACEMENT OF THE RETURN-AIR SILENCER.

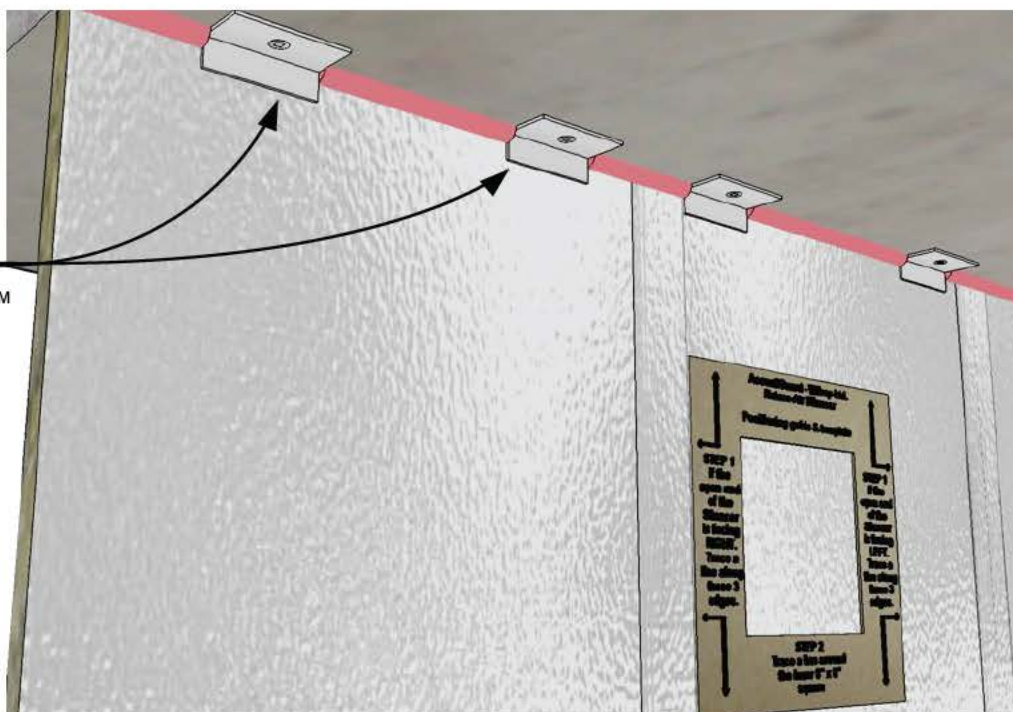
THE PREFERRED LOCATION IS ON A COMMON WALL TO A HALLWAY OR CORRIDOR.

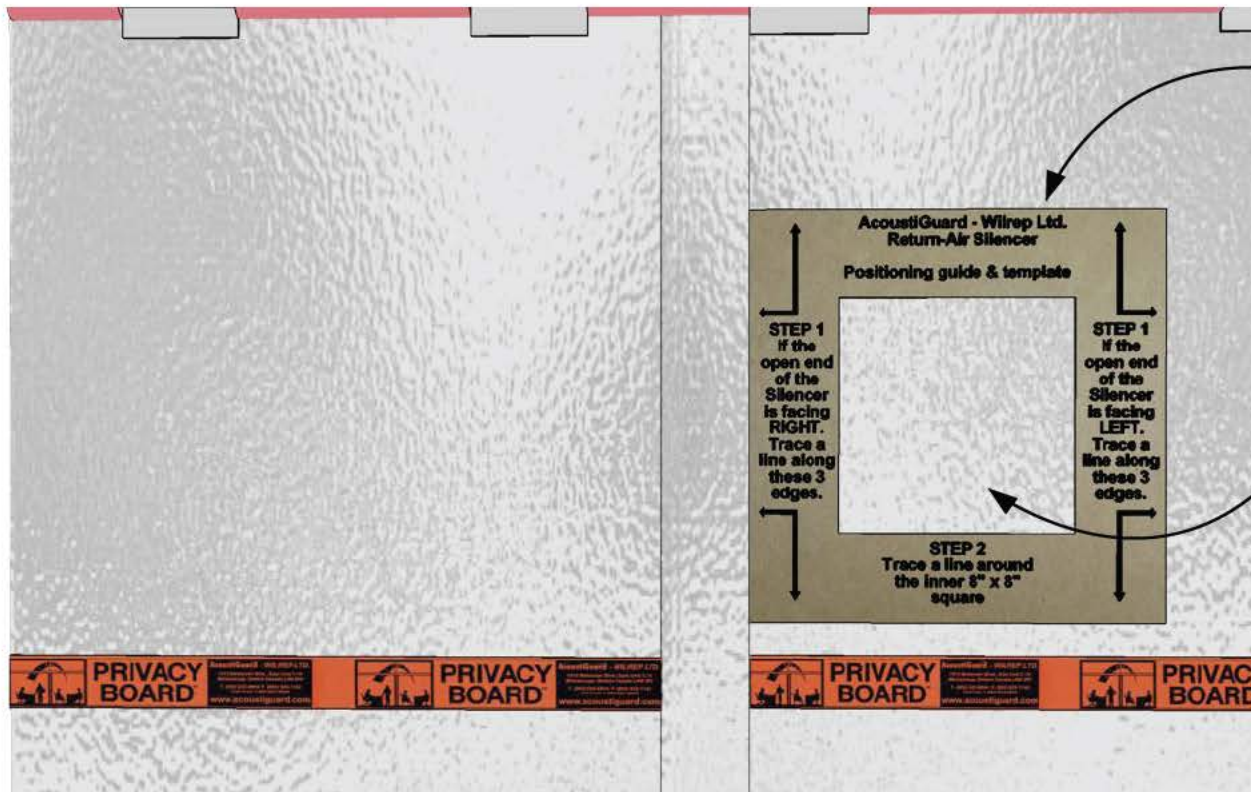
TEMPORARILY ATTACH THE TEMPLATE TO THE PRIVACY BOARD™.

ALLOW ADEQUATE SPACE FOR THE RETURN-AIR SILENCER ONCE IN PLACE.

2. ATTACH 4x L-ANGLE BRACKET PIECES AS SHOWN, TO SUPPORT THE PRIVACY BOARD™ WHILE THE FOAM OR CAULKING CURES. (Angle bracket not supplied).

REPEAT ON THE REVERSE SIDE OF THE PRIVACY BOARD™





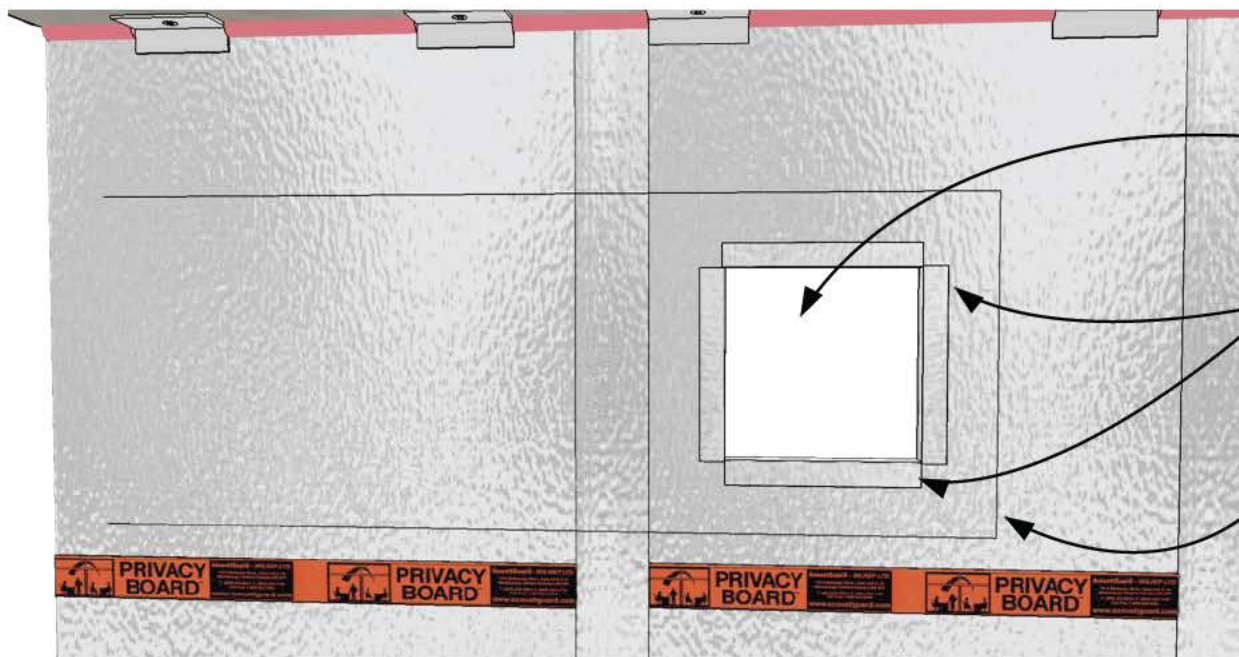
1. TRACE 3-SIDES OF THE OUTER 14" X 14" SQUARE ONTO THE PRIVACY BOARD™ WITH A MARKER.

SEE INSTRUCTIONS ON TEMPLATE

THESE 3-LINES WILL BE YOUR ALIGNMENT GUIDES TO PLACE THE RETURN-AIR SILENCER PRECISELY OVER THE HOLE.

2. TRACE THE INNER 8" X 8" SQUARE ONTO THE PRIVACY BOARD™ WITH A MARKER.

THIS AREA OF THE PRIVACY BOARD™ WILL BE CUT OUT.



3. REMOVE TEMPLATE.

4. WITH A NEW BLADE, CUT OUT AND REMOVE THE 8" X 8" SQUARE PREVIOUSLY TRACED ONTO THE PRIVACY BOARD™.

5. SEAL ALL FOUR CUT EDGES OF THE 8" X 8" SQUARE WITH FSK TAPE (supplied).

**NOTE** THE 3 TRACED LINES FOR ALIGNMENT OF THE RETURN-AIR SILENCER.



ALIGN THE RETURN-AIR SILENCER WITH THE 3-LINES THAT WERE TRACED AROUND THE EXTERIOR OF THE TEMPLATE.

ENSURE THE HOLE IN THE PRIVACY BOARD™ ALIGNS WITH THE INSIDE EDGES OF THE RETURN-AIR SILENCER.

SECURE THE 3 TAPE EDGES OF THE RETURN-AIR SILENCER (CLOSED END & 2 LONG SIDES) TO THE PRIVACY BOARD™ WITH FSK THE TAPE SUPPLIED.

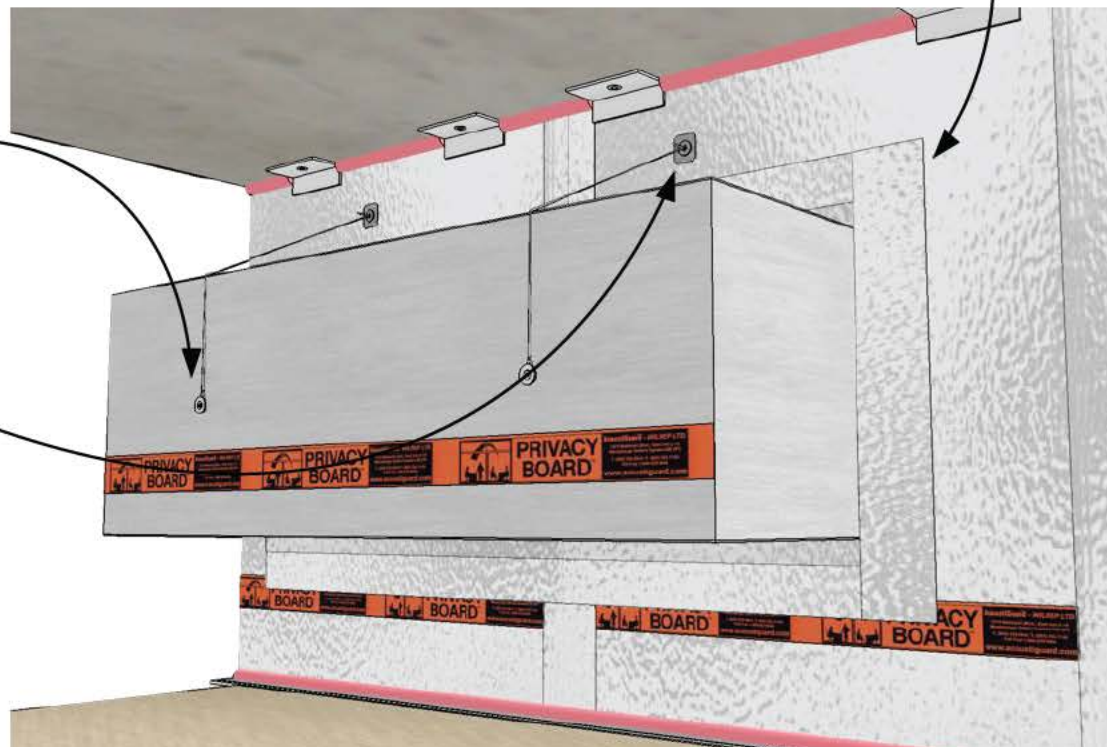
THE RETURN-AIR SILENCER IS SUPPLIED WITH 2 ANCHOR WIRES SCREWED TO THE BACK.

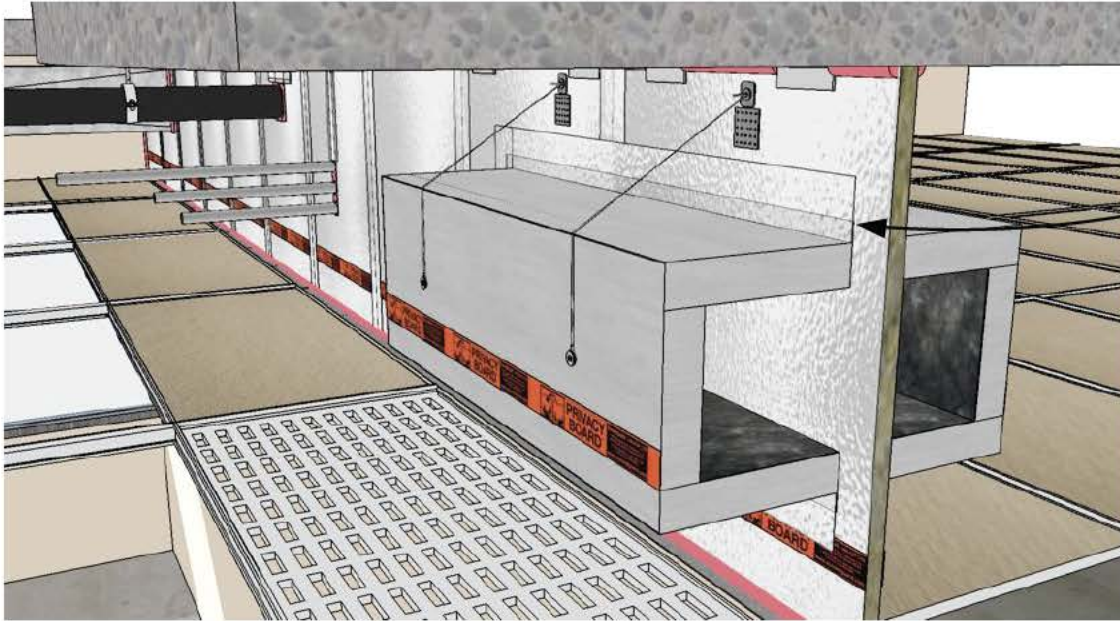
FROM THE REVERSE SIDE, PUSH 2 PUSH PINS THROUGH THE PRIVACY BOARD™ APPROXIMATELY 4" UP FROM THE TOP EDGE OF THE RETURN-AIR SILENCER.

WRAP THE SUPPORT WIRE AROUND THE PUSH PIN AND THEN SECURE WITH THE SPLIT WASHERS.

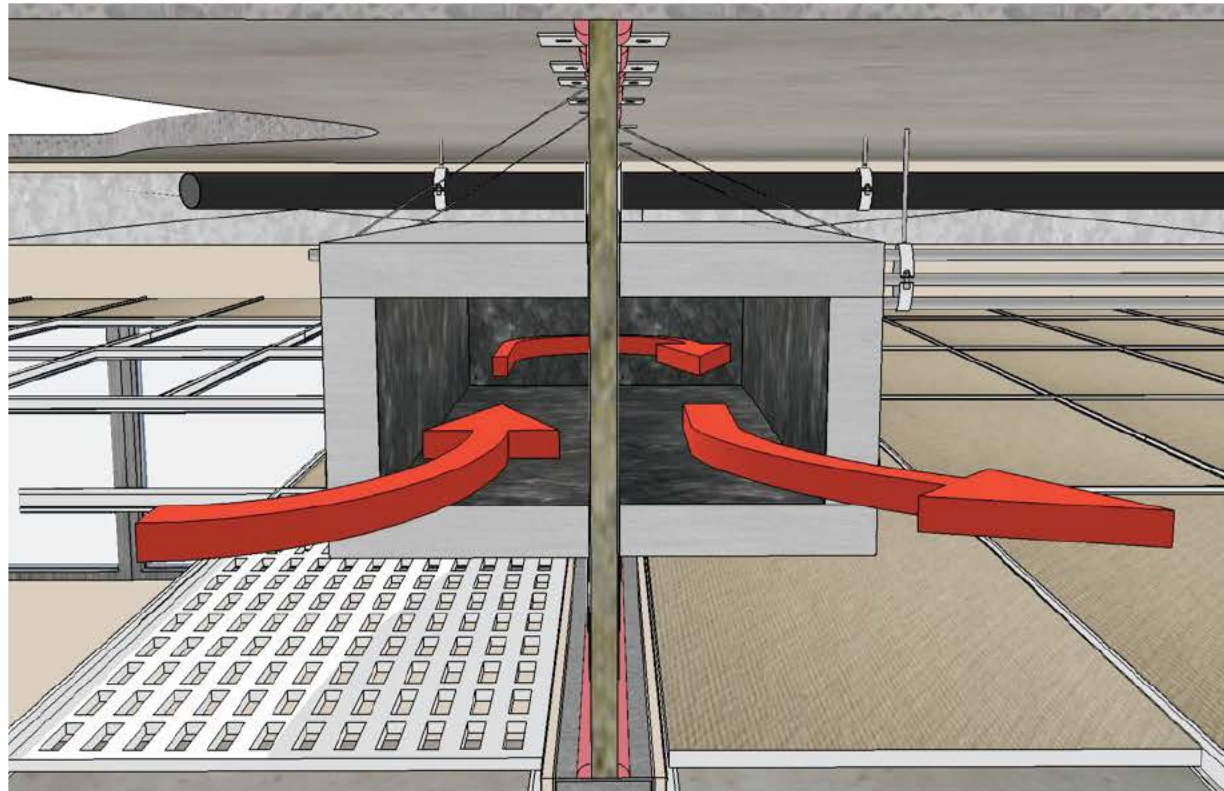
PUSH THE WASHERS IN TOWARDS THE PRIVACY BOARD™ TO ADJUST THE TENSION ON THE SUPPORT WIRES.

FOR SAFETY, CUT OFF THE EXCESS OF THE PUSH PIN ONCE THE WIRES ARE ADJUSTED



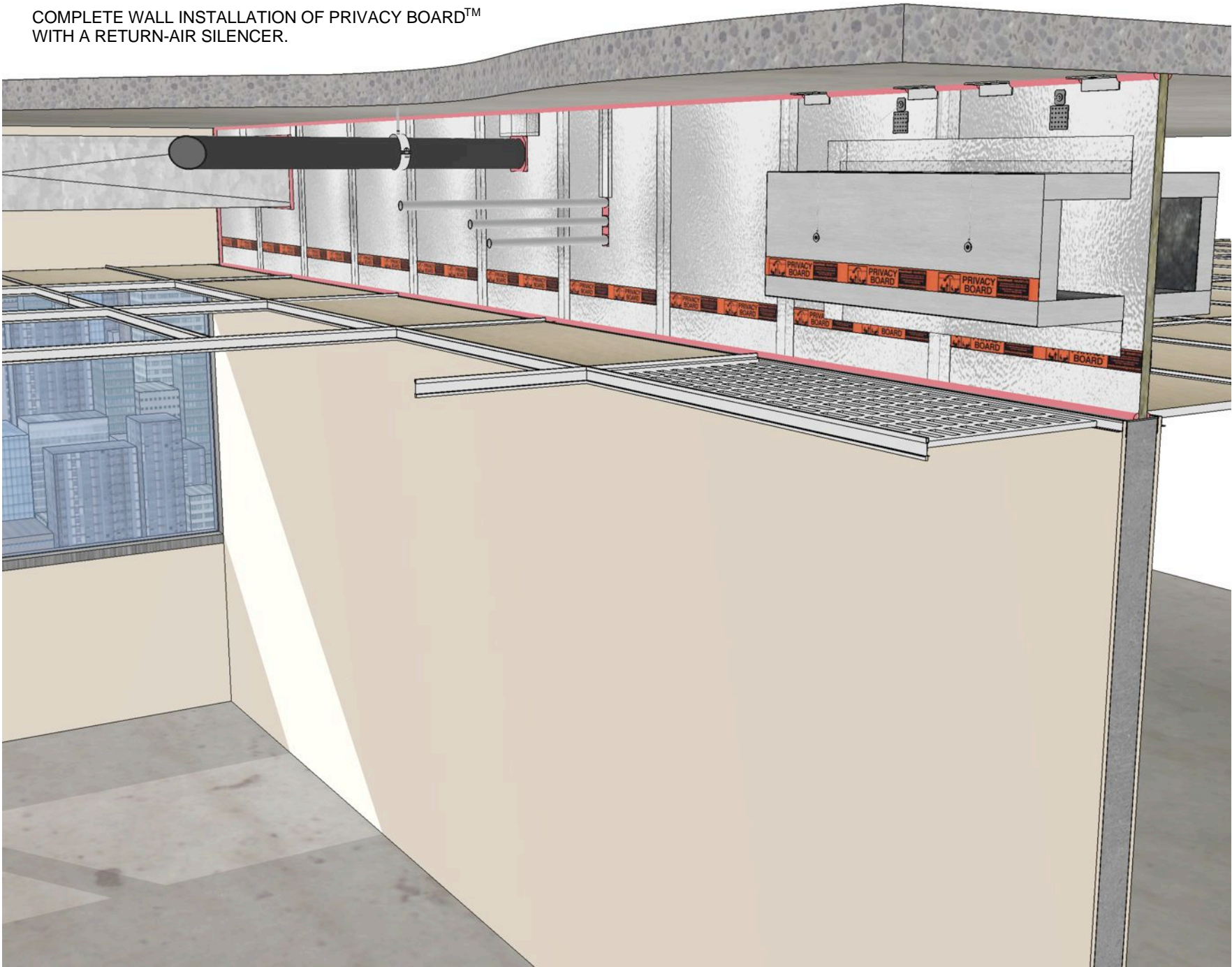


REPEAT THE STEPS ON PAGES G AND H TO  
INSTALL THE SECOND RETURN-AIR SILENCER.



VIEW OF THE AIR-FLOW THROUGH THE  
RETURN-AIR SILENCERS

COMPLETE WALL INSTALLATION OF PRIVACY BOARD™  
WITH A RETURN-AIR SILENCER.



**ACOUSTIGUARD - WILREP LTD.**  
1515 MATHESON BLVD. EAST, UNIT C-10  
MISSISSAUGA, ONTARIO L4W 2P5  
**(905) 625-8944 (888) 625-8944**

**FIRST ISSUED**  
April 12th 2011  
**THIS REVISION DATE**  
Oct 13th 2011

**PROJECT &  
REVISION #**  
0002-R007

**PROJECT  
PRIVACY BOARD™ &  
RETURN-AIR SILENCER  
ILLUSTRATED INSTALLATION  
GUIDE**



# PRIVACY BOARD™ & RETURN-AIR SILENCER

## AcoustiGuard™ PRIVACY BOARD™ SYSTEM (with Return-Air Silencer)

A Pre-engineered Acoustical Extension Wall for Blocking Sound Transfer Above Demising Walls for a Higher Degree of Privacy.

### EXPLANATION

When office spaces share a common plenum, most often the walls do not continue all the way to the floor / ceiling structure above. Regardless of the acoustical integrity of wall partitions or ceiling systems, unwanted sound (noise) can travel through non-ducted plenum spaces and return-air grilles.

Uncontrolled noise and lack of speech privacy can irritate, distract and affect productivity. The **AcoustiGuard™ Privacy Board™** System blocks the area between the top of the demising wall and the structure above without interfering with the air distribution.

It is an easy to install effective barrier that provides acoustic privacy.

### DESCRIPTION

The **AcoustiGuard™ Privacy Board™** System consists of the following elements:

1. A specially engineered “extension wall” system comprised of rigid foil-faced high-density mineral wool fibre panels, 25 mm (1”) thick x 610 mm (24”) x 1220 mm (48”).
2. The Return-Air Silencer is comprised of rigid mineral wool fibre construction as per item 1 above, but 50 mm (2”) wall thickness and with a sound absorptive liner.
3. Galvanized steel angle assembly hardware with supplied fibreglass scrim reinforced foil tape.
4. Class 1 spray foam sealant and caulking used for sealing cut-outs around OWSJ, beams, services, and similar penetrations or voids.

### ACOUSTIC DATA

Results of Sound Transmission Loss (STL) tests on the AcoustiGuard™ Privacy Board™ Return-Air Silencer.

TEST	SOUND TRANSMISSION LOSS (dB)						STC
	125	250	500	1K	2K	4K	
Privacy Board™ only.	15.1	20.6	19.6	19.8	20.2	27.1	24
Privacy Board™ and One (1) Return-Air Silencer.	12.2	20.0	23.2	21.6	24.0	30.3	27
Privacy Board™ and Two (2) Return-Air Silencers.	23.1	26.7	29.0	27.8	28.6	35.1	32

### SPECIFICATIONS (abbreviated)\*

#### Compliance and Performance:

ASTM MEA Approval	Mineral Fibre Block & Board Thermal Insulation New York City Approval	Type IVB, Complies 333-97-M
-------------------	--	--------------------------------

#### MINERAL WOOL

#### Fire Performance:

ASTM E 136 CAN4 S114 ASTM E 84 (UL 723)	Behaviour of Materials at 750° C (1382° F) Test for Non-Combustibility Surface Burning Characteristics	Non-Combustible Non-Combustible Flame Spread = 0 Smoke Developed = 0 Flame Spread = 0 Smoke Developed = 0
CAN/ULC S102	Surface Burning Characteristics	

#### Maximum Service Temperature:

ASTM C411	Hot Surface Performance	In Compliance with ASTM C612 @ 1200° F (650° C)
-----------	-------------------------	--

#### FOIL FACING

#### Flame Spread:

UL 723 / ASTM E 84	Foil side = 10	Paper side = 30
--------------------	----------------	-----------------

#### Smoke Developed:

UL 723 / ASTM E 84	Foil side = 0	Paper side = 5
--------------------	---------------	----------------

**ACOUSTIC LINER:** Black Scrim Liner

\* A complete specification sheet is available by request.

**AcoustiGuard**  
WILREP LTD.

**ACOUSTIGUARD - WILREP LTD.**  
1515 MATHESON BLVD. EAST, UNIT C-10  
MISSISSAUGA, ONTARIO L4W 2P5  
(905) 625-8944 (888) 625-8944

**FIRST ISSUED**  
April 12th 2011

**THIS REVISION DATE**  
Oct 13th 2011

**PROJECT &  
REVISION #**  
0002-R007

**PROJECT  
PRIVACY BOARD™ &  
RETURN-AIR SILENCER  
ILLUSTRATED INSTALLATION  
GUIDE**

**K**